

DIAZZARO
casa

Leather-Look



BLOOM FABRIC LEATHER-LOOK

MARTINDALE 50.000 CYCLES



RAL FINISHING IN MATCHING COLOR

| | | | | |
|-------------------------|-------------------------|---------------------|-------------------------|-------------------------|
| | | | | |
| B1 RAL 9003 | B2 RAL 9010 | B3 RAL 1013 | B4 RAL 7038 | B5 RAL 7045 |
| | | | | |
| B6 RAL 7037 | B7 RAL 7015 | B8 RAL 9005 | B9 RAL 1013 | B10 RAL 1013 |
| | | | | |
| B11 RAL 7032 | B12 RAL 1001 | B13 RAL 1019 | B14 RAL 7006 | B15 RAL 7006 |
| | | | | |
| B16 RAL 8019 | B17 RAL 1004 | B18 RAL 1023 | B19 RAL 090 8080 | B20 RAL 090 8060 |
| | | | | |
| B21 RAL 100 8050 | B22 RAL 100 7030 | B23 RAL 6000 | B24 RAL 6009 | B25 RAL 1013 |
| | | | | |
| B26 RAL 1015 | B27 RAL 1015 | B28 RAL 1014 | B29 RAL 1001 | B30 RAL 8025 |
| | | | | |
| B31 RAL 8011 | B32 RAL 3009 | B33 RAL 3018 | B34 RAL 3000 | B35 RAL 3020 |
| | | | | |
| B36 RAL 2009 | B37 RAL 050 6030 | B38 RAL 3011 | B39 RAL 3004 | B40 RAL 3005 |

WASHING - Oust gently and in case of fight stains pass the surface with a damp cloth or a neutral detergent, rinse with water without squeezing. Let the fabric dry inside out avoiding direct exposure to the sunlight. Iron to the reverse at low temperature. The following instructions are recommended for smooth coated and for more obstinate stains (oil, fat, cosmetics, ink, coffee, liquor, chewing-gum etc.): dissolve immediately with clear ethylic alcohol diluted in water to 20%, dab and then treat with a neutral detergent solution. Rinse abundantly. GENERAL WARNINGS - To avoid permanent stains, the lighter colors of the article should not be brought into contact with textiles and clothing colored with unfixed dyes (jeans). We cannot guarantee the ability to remove unknown dyes from colored products.



BLOOM FABRIC LEATHER-LOOK

MARTINDALE 50.000 CYCLES



RAL FINISHING IN MATCHING COLOR

| | | | | |
|-------------------------|-------------------------|-------------------------|-------------------------|-------------------------|
| | | | | |
| B41 RAL 300 7020 | B42 RAL 4005 | B43 RAL 4001 | B44 RAL 360 6010 | B45 RAL 360 6020 |
| | | | | |
| B46 RAL 4008 | B47 RAL 4004 | B48 RAL 310 4020 | B49 RAL 220 7035 | B50 RAL 5015 |
| | | | | |
| B51 RAL 270 5025 | B52 RAL 270 5035 | B53 RAL 5009 | B54 RAL 5000 | B55 RAL 5000 |
| | | | | |
| B56 RAL 5011 | B57 RAL 8019 | | | |

WASHING - Oust gently and in case of fight stains pass the surface with a damp cloth or a neutral detergent, rinse with water without squeezing. Let the fabric dry inside out avoiding direct exposure to the sunlight. Iron to the reverse at low temperature. The following instructions are recommended for smooth coated and for more obstinate stains (oil, fat, cosmetics, ink, coffee, liquor, chewing-gum etc.): dissolve immediately with clear ethylic alcohol diluted in water to 20%, dab and then treat with a neutral detergent solution. Rinse abundantly. GENERAL WARNINGS - To avoid permanent stains, the lighter colors of the article should not be brought into contact with textiles and clothing colored with unfixed dyes (jeans). We cannot guarantee the ability to remove unknown dyes from colored products.



REBEL



MARTINDALE 20.000 CYCLES



RAL FINISHING IN MATCHING COLOR



R1 RAL 1001



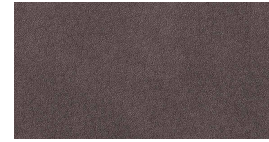
R2 RAL 8025



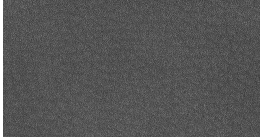
R3 RAL 7006



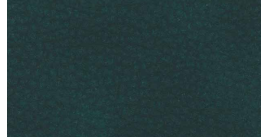
R4 RAL 7006



R5 RAL 7006



R6 RAL 7043



R10 RAL 6012



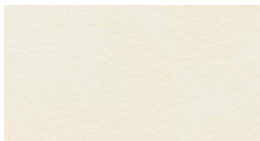
R11 RAL 3007



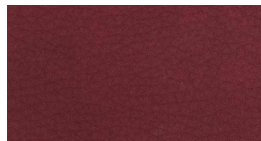
R13 RAL 7042



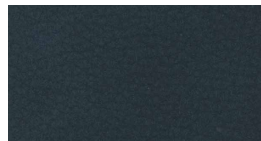
R14 RAL 1034




R15 RAL 1013



R16 RAL 3004



R17 RAL 5008

 WASHING - Dust gently and in case of light stains pass the surface with a damp cloth or a neutral detergent, rinse with water without squeezing. Let the fabric dry inside out avoiding direct exposure to the sunlight. Iron to the reverse at low temperature. The following instructions are recommended for smudged and for more obstinate stains (oil, fat, cosmetics, ink, coffee, liquor, chewing-gum etc.): dissolve immediately with acetic acid diluted in water to 20%, dab and then treat with a neutral detergent solution. Rinse abundantly. GENERAL WARNINGS - To avoid permanent stains, the lighter colors of the article should not be brought into contact with textiles and clothing colored with unfixed dyes (jeans). We cannot guarantee the ability to remove unknown dyes from light colored products.



PALMA

Folder N° 105



MARTINDALE 20.000 CYCLES



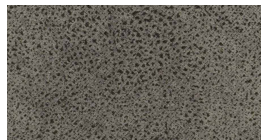
RAL FINISHING IN MATCHING COLOR



PA7 RAL 7015




PA13 RAL 1019



PA15 RAL 7039



PA57 RAL 8017

 WASHING - Dust gently and in case of light stains pass the surface with a damp cloth or a neutral detergent, rinse with water without squeezing. Let the fabric dry inside out avoiding direct exposure to the sunlight. Iron to the reverse at low temperature. The following instructions are recommended for smudged and for more obstinate stains (oil, fat, cosmetics, ink, coffee, liquor, chewing-gum etc.): dissolve immediately with acetic acid diluted in water to 20%, dab and then treat with a neutral detergent solution. Rinse abundantly. GENERAL WARNINGS - To avoid permanent stains, the lighter colors of the article should not be brought into contact with textiles and clothing colored with unfixed dyes (jeans). We cannot guarantee the ability to remove unknown dyes from light colored products.